

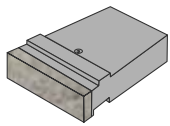
Visit one of our showrooms or learn more at [midlandconcreteproducts.com](http://midlandconcreteproducts.com)

Clear Lake · 641.357.2176 | Marshalltown · 800.542.0015 | Waterloo · 800.747.8421 | Hiawatha · 319.393.3531

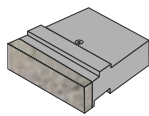
## FEATURES

- **Performance:** ReCon's large retaining wall block can be engineered for unreinforced gravity retaining walls reaching heights in excess of 20'.
- **Aesthetics:** ReCon offers an industry leading five unique texture families: Granite, Limestone, Old World, Rustic, and Weathered Edge.
- **Value:** The ReCon concrete blocks for retaining walls are made from wet cast concrete specifically designed to withstand adverse conditions.

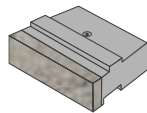
## STANDARD UNITS



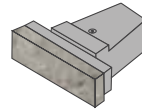
FM60/FB60



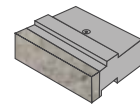
FM45/FB45



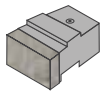
FM39/FB39



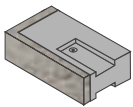
FF39



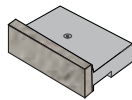
FM24



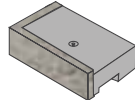
HM24



C



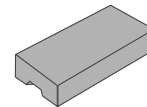
T24



LCT/RCT

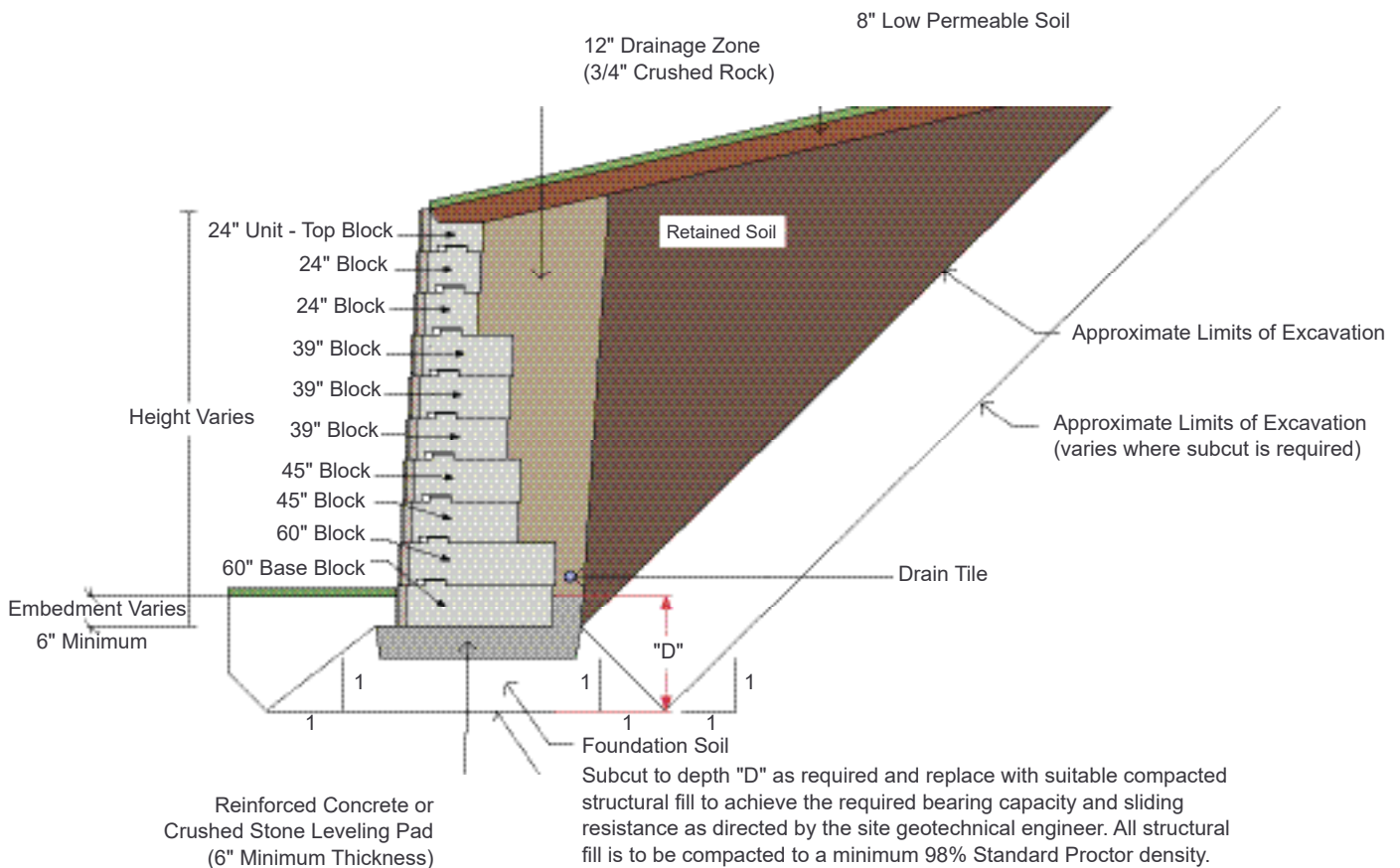


HT24



E Cap/R Cap

## INSTALLATION



Visit one of our showrooms or learn more at [midlandconcreteproducts.com](http://midlandconcreteproducts.com)