



COMPAC III STRAIGHTFACE



Visit one of our showrooms or learn more at midlandconcreteproducts.com

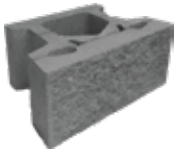
Clear Lake • 641.357.2176 | Marshalltown • 800.542.0015 | Waterloo • 800.747.8421 | Hiawatha • 319.393.3531

M PRODUCT INFORMATION

Keystone Compac units are made of high-strength, low absorption concrete for long lasting structures. All structural units are interconnected using high strength fiberglass pins for a strong shear connection. The connecting pins allow for ease of unit alignment and a secure, positive mechanical connection with soil reinforcement materials. Keystone's patented pin system is the critical difference providing the safety and security of a structural retaining wall solution.

M FEATURES

- High Strength Pin Connection System
- Structural Integrity
- Ease of Installation
- Aesthetics
- Design Versatility

**M** PRODUCT SPECIFICATIONS

Compac III
Hard-Split Straight Face
8 x 18 x 12

Weight: 72# ea



Hard-Split Corner
8 x 18 x 9



4" Hard-Split Cap
4 x 15 $\frac{1}{8}$ x 9 $\frac{3}{8}$

Weight: 47# ea

M COLORS

Charcoal



Grey



Granite



Harvest



Taupe



Walnut

Due to inherent characteristics of concrete, color may vary slightly. No guarantee of color shade is made or implied.