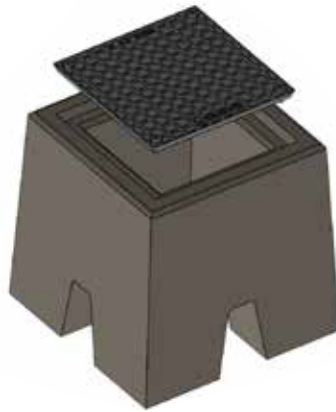




Visit one of our showrooms or learn more at midlandconcreteproducts.com

Clear Lake • 641.357.2176 | Marshalltown • 800.542.0015 | Waterloo • 800.747.8421 | Hiawatha • 319.393.3531

FEATURES

EV Block System
22" x 22" x 24"
650 lbs.

- EV Blocks is a precast concrete electric vehicle (EV) charging point foundation that features a universal adaptor plate and side openings for conduit or ducting installation.
- The universal adapter plate allows the below ground infrastructure to be installed before the EV charger has been specified or selected.
- Since the majority of chargers installed are Level 2, the Standard EV Block is an ideal solution that pairs with nearly all chargers on the market.
- It saves time, money, and stress while meeting the highest quality standards.
- The Standard EV Block is 22" x 22" x 24" tall. The size and mass of the Standard EV Block makes it ideal for nearly all Level 2 charger installations.

INSTALLATION

The streamlined 8-step installation process quickly delivers superior foundations for your electric car charging station. You can install EV Blocks in any weather, meaning you never have to worry about picking the right moment.

- 1) Excavate area where the block will be installed and run conduit
- 2) Install block by lowering it into the prepared excavation
- 3) Prepare Plate for EV charger pole
- 4) Drill fixing holes
- 5) Fit pole to adaptor plate
- 6) Install charger cables
- 7) Fix down adaptor plate via the pre-threaded bolt holes within the block
- 8) Fit charger

The benefits of installing a universal EV charger foundation

As a universal EV charger foundation, the EV Block can accommodate a huge variety of EV chargers currently available in the US market. That means you can complete the groundwork for your EV charging station even before you decide which electric car charger to invest in. This allows any forward-thinking business to take a flexible approach by avoiding disruptions and future proofing their installations.

For more information, please visit evblocks.com



Visit one of our showrooms or learn more at midlandconcreteproducts.com

Clear Lake • 641.357.2176 | Marshalltown • 800.542.0015 | Waterloo • 800.747.8421 | Hiawatha • 319.393.3531